



Cable entry and cable holding systems

Solutions for cable applications

Overview

Murrplastik Systemtechnik GmbH has offered cable entry strips, cable entry panels, strain relief systems, cable holding systems and EMC solutions for many years now. Right from the beginning, priority was given to a systematic approach. The priority has always been to design “products which provide definite application advantages to the customer”.

The KDL cable entry system has been developed to make it much easier for end customers to route pre-assembled cables e.g. measurement, servo cables, computer cables and bus systems. During the design process, considerable emphasis was given to the need for a simple and trouble free application.

KDL – entry system for cables with plugs

The cable entry system is designed for inserting pre-assembled cables and electrical conduits in divider walls, junction boxes, control cabinets...

Applications:

interior use, driver's cabs, in control cabinet/plant/machine construction. Everywhere where pre-assembled cables have to be routed.



KDP – entry system for cables without plugs

The cable insertion panel is a routing and fastening system for cables without plugs or pneumatic hoses.

Applications:

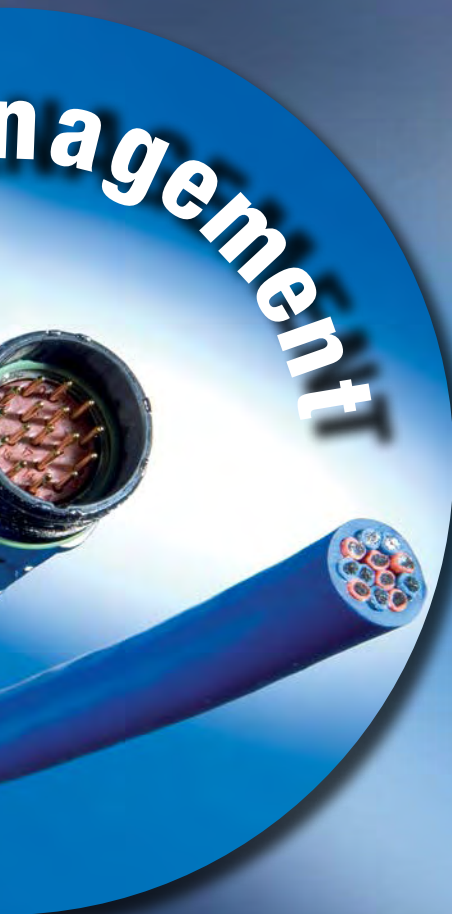
interior use, driver's cabs, in control cabinet/plant/machine construction. Cable entry systems are the ideal option any time quick, easy and cable-protecting



Cable management

For EMC-capable fixing systems, Murrplastik offers a very extensive portfolio of products dedicated to making assembly as easy as possible. A further innovation is the KDP/F cable entry strip, offered as a low-cost alternative to the KDP/N versions established within the market.

Featuring rapid installation, the KDP models offer tremendous potential savings. A lower footprint and user-friendly assembly are two of the key advantages offered by these products. However, these are just some of the outstanding innovations from Murrplastik Systemtechnik GmbH.



ZL strain relief

The strain relief plate is used wherever secure and simple strain relief is required for cables, single wires or hoses.

- Broad range of models
- Easy assembly
- In plastic or metal
- Stackable



EMC solutions

The EMC systems are used to dissipate electromagnetic interference and conducted fault currents.

- High attenuation performance
- Easy assembly
- Cable-friendly contact system
- Very high packing density
- Visible contact area



KDL Cable entry systems for cables with plugs

Cable entry system

Cable entry system for insertion and/or feedthrough of pre-fabricated conduits.
Cables with plugs can easily be inserted into casing. Various systems are available for selection.

1 KDL/C

KDL/C combines a high packing density with easy, fully-upgradeable installation. For more demanding environments, this model can be upgraded using KDL/D at any time.

2 KDL/D (IP 65)

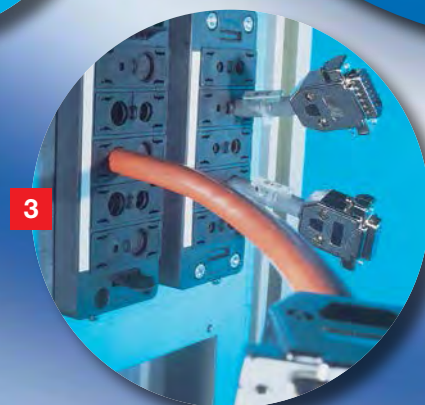
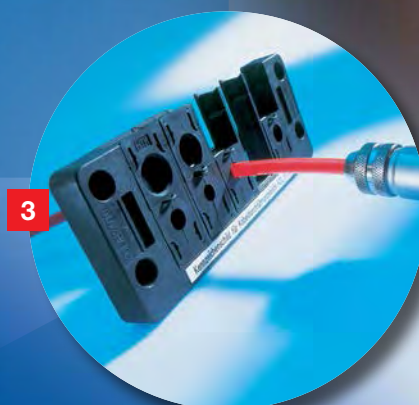
Like KDL/C, KDL/D offers a high packing density with fully-upgradeable installation. An extra centre strut makes the frame even more durable.

3 KDL/E

The KDL/E reflects continuing development of the KDL in its 3rd generation. Pre-fabricated conduits can be inserted even more simply and quickly, e.g. into enclosures. Quicker assembly with increased capacity.

Advantages

- Cable infeed without interruption
- Easy assembly
- Strain relief
- EMC solutions
- High protection class to IP 65
- High packing density
- Does not invalidate manufacturer's cable/plug system warranty
- Standard cut-out dimensions (plug connectors from Harting, Wieland)
- Optional labelling
- UR
- CSA



Cable management



4 KDL

The KDL is a two-part plate that serves to insert pre-fabricated conduits. Cables and plug can be simply inserted into enclosures.



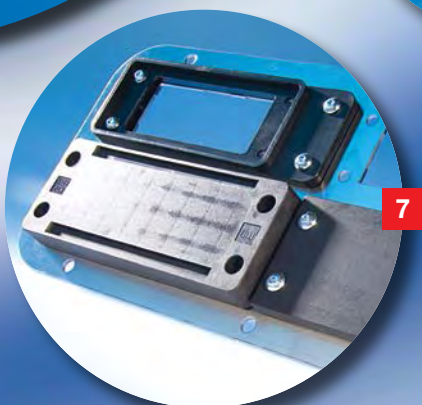
5 KDL/S

The KDL/S is a custom cable entry system. It is manufactured to meet the customer's specifications. Various conduit shapes can be inserted using this plate.



6 KDL-Jumbo

KDL-Jumbo is a cable entry system offering fully-upgradeable installation for conduits measuring 30–65 mm in diameter.



7 KDL accessories

Blanking plates, adapter plates and discharge plates round out the delivery programme.

management

KDP cable insertions for cables without plugs

The cable entry plate is an entry and fastening system for cables without plugs and pneumatic conduits such as those used in control cabinet, plant or machine construction. Wherever quick assembly, cable-protecting and high packing density are required, the cable insertion system is used. A real alternative to cable fittings. Various systems are available for selection.

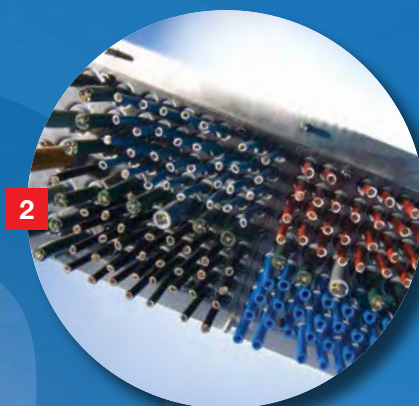
1 KDP/F

Cable entry plate with moulded-on membrane for punching through. Available both as a highly-flexible model and with different grades of hole reinforcement.



2 cablequick® KDP Metal

Rectangular cable entry system made of aluminium and stainless steel for screwing in. With pre-punched and resealable openings. A real alternative to cable fittings.



3 KDP Multi

Rectangular plastic cable entry plates for screwing in or snapping in by using the enclosed catch hooks. Additional slot for up to 4 pre-assembled cables.



Advantages

- Huge time savings during assembly
- Extremely small footprint
- High packing density
- Tool-free assembly
- High protection class to IP 66/67
- No kinks in cables or hosing
- Standard cut-out dimensions
- Optional labelling
- UR
- CSA
- High packing density
- Ensures a tight seal



Cable management



4

4 KDP Plastic round

Round plastic cable panels with metric threads for screwing in or snapping in using integrated catch hooks. With pre-punched and resealable openings. A real alternative to cable fittings.



5

5 KDP/N plastic, rectangular

Rectangular plastic cable panels for screwing in or snapping in using integrated catch hooks. With pre-punched and resealable openings.



6

6 KDM

Cable entry membrane, for punching through with e.g. plug-less cables and pneumatic hoses. Rounded design, M16–M50 available.



7

7 KDP/H

Plastic conduit connection for direct connection to Murrflex cable protection conduits on rectangular KDP/N cable entry strips as well as on KDL/C and KDL/D cable entry systems.

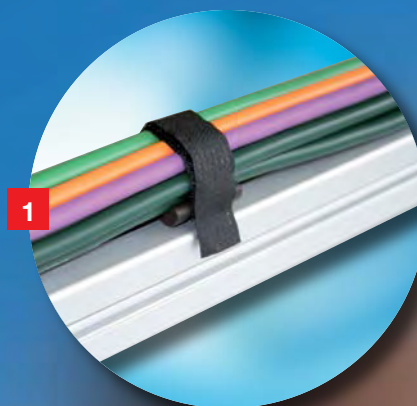
Management

ZL Cable strain relief

Strain relief and organisation of conduits – quickly, simply, safely. A large selection of strain relief plates covers a variety of potential uses. Various types are available for screw on, snapping in or sliding in. Available in plastic or metal, or as an EMC solution. Anything is possible. The services are simply affixed to the strain relief using standard cable ties.

1 ZL-fix

The ZL-Fix Velcro brackets can be bolted on directly or mounted on a rail groove. They are ideal for bundling or providing strain relief for cables and hoses.



2 ZL T-slot nuts

The ZL versions with pre-assembled T-slot nuts are mounted on C-sections with a range of section widths.



Cable management

Advantages

- Simple to use
- Cost-effective
- Broad range of models
- Quick assembly
- High traction
- EMC models
- Stackable



**3 ZL bolts**

ZL strain relief systems are bolted-on directly and are ideal for routing or providing strain relief for cables and hoses.

**4 KAF**

The cable fixing plates are simply slotted onto a 35 mm top hat rail or C-section (Niedax 2970; 2971); no tools are required.

**5 ZL accessories**

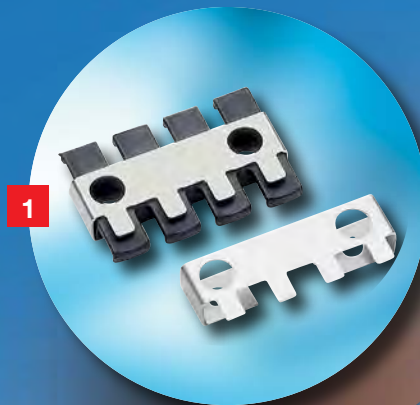
Available accessories include brass spacer sleeves and insertable bushings: these then enable the strain relief systems to be stacked.

EMC solutions

As electronic components continue to grow more numerous, the overall volume of electromagnetic radiation is also increasing. The integration of a sound shielding plan is fast becoming essential. Murrplastik offers a comprehensive range of EMC-related products.

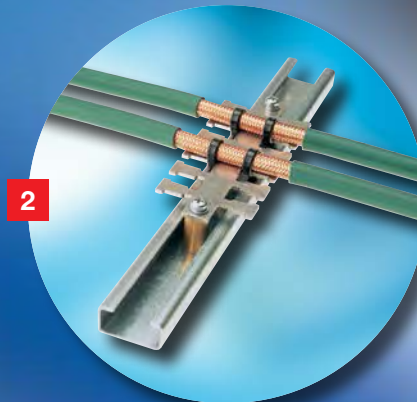
1 EMV-ZL

ZL-AB discharge plates are slide-mounted onto our ZL strain relief plates as an upgrade. Supply lines are secured using cable ties.



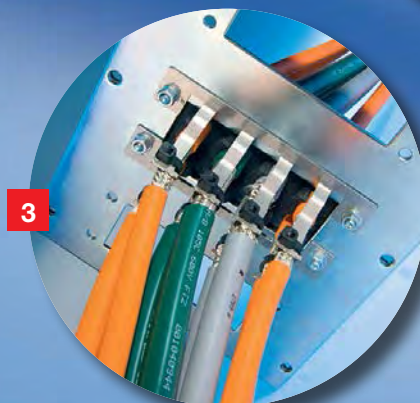
2 EMV-KAF

The metal KAF/xx-EMV cable fixing plates are either bolted-on directly or slotted onto the 35 mm top hat rail. Cables are fixed in place using cable ties.

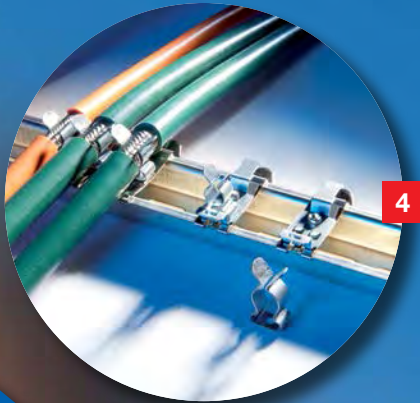


3 EMC discharge plate

The KDL-AB and KDL/N-AB model discharge plates are an excellent choice for fault current dissipation in combination with our cable entry strips.



Cable management



4 EMV-Clip (up to 55 dB)

The EMC shield clips are an excellent solution for dissipating conducted fault currents.

The system is characterised by its simple, flexible handling, a wide-area contact system that is cable-friendly and its highly compact form factor.



5 EMV-KDL

The KDL-EMV cable entry strip is a split-system model for fitting to existing installations.

The system is based on our plastic KDL model and is metallised on the surface.



6 EMV-KDP

The EMC modules are used in conjunction with the KDP/N cable entry panels. They are simply bolted on to the interior surface of the cabinet.

management

Germany

Head Office

Murrplastik Systemtechnik GmbH
Postfach 1143
71567 Oppenweiler
☎ +49 7191 4820
☎ +49 7191 482-92280
www.murrplastik.de
info@murrplastik.de

Americas

North and South America

Murrplastik Systems, Inc.
1175 US Highway 50
Milford, OH 45150
☎ +1 513 201 30 69
☎ +1 215 822 76 26
www.murrplastik.com
cablemgmt@murrplastik.com

Austria

Murrplastik Systemtechnik GmbH
☎ +43 732 660 870
☎ +43 732 660 872
www.murrplastik.at
info@murrplastik.at

China

Murrplastik Asia Co., Ltd.
1802 Rm. No. 218
Hengfeng Rd.
200070 Shanghai
☎ +86 21 512 869 25
☎ +86 21 512 869 29
www.murrplastik.com.cn
info@murrplastik.com.cn

France

Murrtechnic S.à.r.l
Zone industrielle Sud,
6 rue Manurhin
B.P. 62, 68120 Richwiller
☎ +33 389 570 010
☎ +33 389 530 966
www.murrtechnic.eu
murrtechnic@murrtechnic.fr

Italy

Murrplastik Italia S.r.l.
Via Circo, 18
20123 Milano
☎ +39 02 856 805 70
☎ +39 02 805 034 69
www.mp.de
info@it.mp.de

Spain

Murrplastik S.L.
Paseo Ubarburu, 76
Pabellón 34, polígono 27
20014 San Sebastián
☎ +34 943 444 837
☎ +34 943 472 895
www.murrplastik.es
info@murrplastik.es

Switzerland

Murrplastik AG
Ratihard 40
8253 Willisdorf
☎ +41 52 646 06 46
☎ +41 52 646 06 40
www.murrplastik.ch
info@murrplastik.ch



0701SL

13



MP8902874100